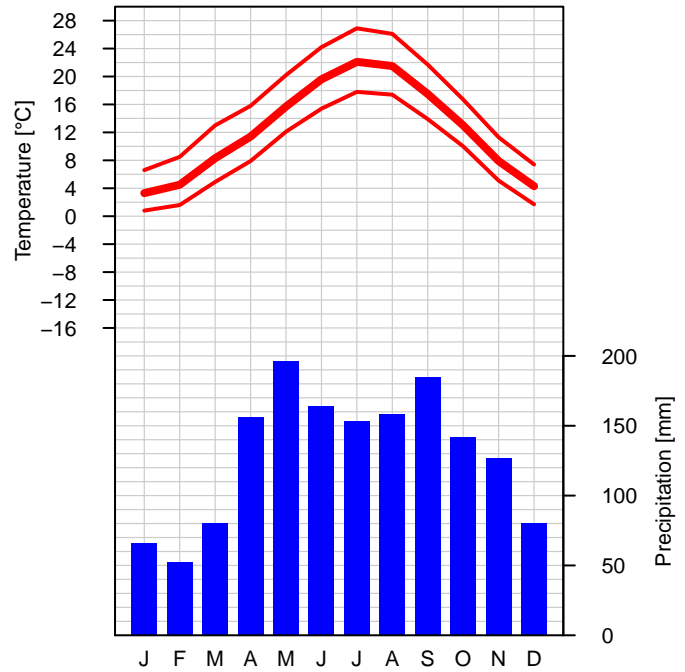
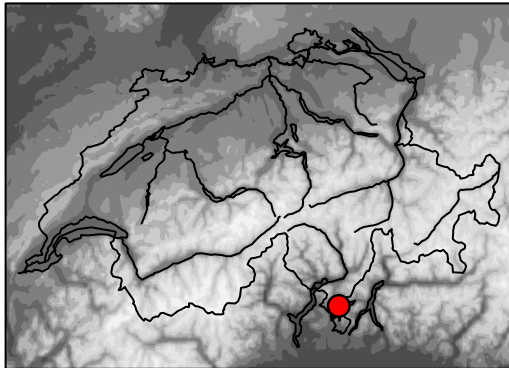




# Climate normals Lugano

Reference period 1981–2010

**Altitude a.s.l.:** 273 m  
**Geogr. coord.:** 46 N / 8.96 E  
**Swiss coord.:** 2'717'874 / 1'095'883  
**Climate region:** Alpine south side



	Jan	Feb	Mar	Apr	May	Jun	Jul	Aug	Sep	Oct	Nov	Dec	Year
<b>Temperature [°C]</b>	3.3	4.5	8.3	11.4	15.7	19.6	22.1	21.5	17.5	13.0	7.9	4.3	12.4
<b>Maximum temp [°C]</b>	6.6	8.5	13.0	15.8	20.2	24.2	26.9	26.1	21.7	16.7	11.3	7.4	16.5
<b>Minimum temp [°C]</b>	0.8	1.6	4.9	7.9	12.1	15.4	17.8	17.4	13.9	10.0	5.1	1.7	9.1
<b>Ice days [days]</b>	0.3	0.2	0.0	0.0	0.0	0.0	0.0	0.0	0.0	0.0	0.0	0.2	0.7
<b>Frost days [days]</b>	10.6	6.7	1.3	0.0	0.0	0.0	0.0	0.0	0.0	0.0	1.5	8.0	28.1
<b>Summer days [days]</b>	0.0	0.0	0.1	0.1	3.3	13.2	24.4	20.9	3.5	0.2	0.0	0.0	65.7
<b>Heat days [days]</b>	0.0	0.0	0.0	0.0	0.1	1.7	3.8	2.4	0.1	0.0	0.0	0.0	8.1
<b>Sunshine [h]</b>	125	138	186	171	186	222	255	240	187	140	110	108	2067
<b>Sunshine [%]</b>	56	55	56	48	48	57	65	64	55	47	48	53	55
<b>Bright days [days]</b>	13.2	10.8	11.5	8.9	7.9	9.4	12.8	12.8	10.2	10.4	10.9	12.6	131.4
<b>Cloudy days [days]</b>	9.8	8.1	8.3	10.4	9.5	6.2	3.8	4.4	7.4	11.8	11.8	11.1	102.6
<b>Precipitation sum [mm]</b>	66	52	80	156	196	164	153	158	185	142	127	80	1559
<b>Precipitation 1 mm [days]</b>	4.8	4.6	6.1	10.6	12.8	10.0	7.9	9.6	8.4	9.1	7.8	6.4	98.1
<b>Precipitation 5 mm [days]</b>	3.1	2.7	3.8	7.2	9.0	6.8	5.8	6.3	6.2	6.0	5.2	4.2	66.3
<b>Precipitation 10 mm [days]</b>	2.1	1.6	2.5	5.1	6.4	5.0	4.1	4.9	4.7	4.4	3.7	2.8	47.3
<b>Precipitation 50 mm [days]</b>	0.1	0.1	0.2	0.4	0.5	0.6	0.8	0.7	0.9	0.5	0.5	0.1	5.4
<b>Precipitation 100 mm [days]</b>	0.0	0.0	0.0	0.0	0.1	0.1	0.1	0.0	0.2	0.0	0.0	0.0	0.5



## Climate normals Lugano

Reference period 1981–2010

	Jan	Feb	Mar	Apr	May	Jun	Jul	Aug	Sep	Oct	Nov	Dec	Year
<b>Precipitation 0%–q [mm]</b>	0	0	2	9	67	17	14	12	27	4	1	1	952
<b>Precipitation 20%–q [mm]</b>	6	12	23	71	103	80	68	83	68	44	30	34	1334
<b>Precipitation 40%–q [mm]</b>	41	25	43	98	151	128	114	114	122	94	84	64	1487
<b>Precipitation 60%–q [mm]</b>	57	52	76	136	181	183	145	168	197	178	112	88	1615
<b>Precipitation 80%–q [mm]</b>	130	94	126	228	268	234	230	254	257	223	211	137	1706
<b>Precipitation 100%–q [mm]</b>	241	155	253	546	426	383	397	321	447	366	536	160	2189
<b>Snowfall [cm]</b>	13	4	1	0	0	0	0	0	0	0	1	9	28
<b>Snowfall [days]</b>	1.1	0.9	0.2	0.0	0.0	0.0	0.0	0.0	0.0	0.0	0.2	1.3	3.7
<b>Snow cover &gt; 0 cm [days]</b>	4.3	3.7	0.4	0.0	0.0	0.0	0.0	0.0	0.0	0.0	0.2	3.4	12.0
<b>Snow cover &gt; 1 cm [days]</b>	4.0	3.4	0.4	0.0	0.0	0.0	0.0	0.0	0.0	0.0	0.1	3.3	11.2
<b>Snow cover &gt; 10 cm [days]</b>	1.3	1.0	0.0	0.0	0.0	0.0	0.0	0.0	0.0	0.0	0.0	0.7	3.0
<b>Snow cover &gt; 50 cm [days]</b>	0.2	0.0	0.0	0.0	0.0	0.0	0.0	0.0	0.0	0.0	0.0	0.0	0.2
<b>Relative humidity [%]</b>	70	65	61	66	70	68	66	69	73	78	72	70	69
<b>Vapor pressure [hPa]</b>	5.7	5.8	6.9	9.0	12.6	15.6	17.7	17.8	14.9	11.9	8.1	6.1	11.0
<b>Air pressure station [hPa]</b>	983.3	981.5	979.7	977.4	978.7	979.2	979.3	979.2	980.4	981.6	980.7	981.7	980.2
<b>Air pressure red. sea [hPa]</b>	1020	1018	1016	1013	1014	1014	1014	1014	1015	1017	1017	1019	1016
<b>Wind speed [m/s]</b>	1.5	1.7	2.1	2.0	1.7	1.8	1.8	1.7	1.6	1.4	1.5	1.5	1.7
<b>Wind 10 m/s [days]</b>	1.3	1.5	2.3	2.1	1.7	1.2	1.4	1.5	0.9	0.8	1.5	1.5	17.7
<b>Wind 20 m/s [days]</b>	0.0	0.0	0.0	0.0	0.0	0.0	0.0	0.0	0.0	0.0	0.0	0.0	0.0
<b>Wind 30 m/s [days]</b>	0.0	0.0	0.0	0.0	0.0	0.0	0.0	0.0	0.0	0.0	0.0	0.0	0.0
<b>Visibility &lt; 100 m [days]</b>	0.1	0.1	0.0	0.0	0.0	0.0	0.0	0.1	0.0	0.1	0.3	0.1	0.8
<b>Visibility &lt; 1000 m [days]</b>	1.4	1.0	0.7	0.3	0.5	0.1	0.0	0.2	0.2	0.8	1.2	1.4	7.8



## Climate normals Lugano

Reference period 1981–2010

### Legend:

<b>Climate graph:</b>	Graph showing long-term means of monthly mean temperature, mean monthly maximum and minimum temperature as well as monthly precipitation sums of a certain measuring site.
<b>Table:</b>	Long-term means of monthly mean values and monthly sums of different climatological parameters. Missing values (no measurements or measuring period too short) are labeled as "-".
<i>Temperature [°C]</i>	monthly mean temperature
<i>Maximum temp [°C]</i>	monthly mean of daily maximum temperature
<i>Minimum temp [°C]</i>	monthly mean of daily minimum temperature
<i>Ice days [days]</i>	number of days with maximum temperature below 0° Celsius
<i>Frost days [days]</i>	number of days with minimum temperature below 0° Celsius
<i>Summer days [days]</i>	number of days with maximum temperature equal to or above 25° Celsius
<i>Heat days [days]</i>	number of days with maximum temperature equal to or above 30° Celsius
<i>Sunshine [h]</i>	measured sunshine duration
<i>Sunshine [%]</i>	ratio of measured sunshine duration to possible sunshine duration
Bright days [days]	number of days with sunshine duration greater than 80%
Cloudy days [days]	number of days with sunshine duration less than 20%
<i>Precipitation sum [mm]</i>	monthly precipitation sum
<i>Precipitation X mm [days]</i>	number of days with precipitation equal to or above X mm
<i>Precipitation X%-q [mm]</i>	X%-quantile of the monthly precipitation sums (0%: lowest value; 40%: 40%/60% of the values are lower/higher than this value; 100%: highest value) Attention: Annual values do not correspond to the sum of the monthly values.
Snowfall [cm]	monthly snowfall sum
Snowfall [days]	number of days with snowfall equal to or above 1 cm
Snow cover > X cm [days]	number of days with snow cover above X cm
Relative humidity [%]	monthly mean of relative humidity
<i>Vapor pressure [hPa]</i>	monthly mean of vapor pressure
<i>Air pressure station [hPa]</i>	monthly mean of air pressure at station level
<i>Air pressure red. sea [hPa]</i>	monthly mean of air pressure reduced to sea level
<i>Wind speed [m/s]</i>	mean monthly wind speed
Wind X m/s [days]	number of days with wind speed (10min mean) equal to or above X m/s
Visibility < X m [days]	number of days with visibility < X m (at least once a day). A visibility below 1000 m is also called fog.

Homogeneous data series were used to calculate long-term means for the parameters shown in italics. The selection of the parameters is based on the guidelines of the World Meteorological Organization (WMO–No. 1203). The values can change due to continuous quality control and homogeneity updates. Further information on the Swiss climate and on the homogenization topic can be found on [www.meteoswiss.ch](http://www.meteoswiss.ch).