



Climate normals Fribourg / Posieux

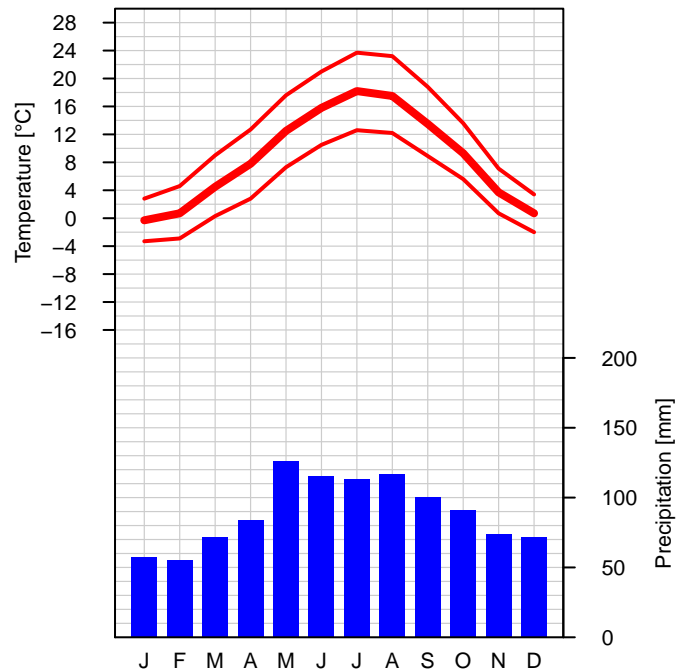
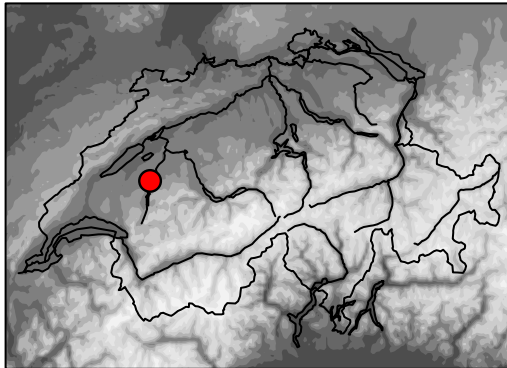
Reference period 1981–2010

Altitude a.s.l.: 651 m

Geogr. coord.: 46.77 N / 7.11 E

Swiss coord.: 2'575'184 / 1'180'076

Climate region: Western plateau



	Jan	Feb	Mar	Apr	May	Jun	Jul	Aug	Sep	Oct	Nov	Dec	Year
Temperature [°C]	-0.3	0.7	4.5	7.8	12.5	15.8	18.2	17.5	13.5	9.3	3.7	0.7	8.7
Maximum temp [°C]	2.8	4.6	9.0	12.7	17.6	21.0	23.7	23.2	18.8	13.6	7.1	3.4	13.1
Minimum temp [°C]	-3.3	-2.9	0.3	2.8	7.3	10.5	12.6	12.2	8.9	5.6	0.7	-2.0	4.4
Ice days [days]	8.4	5.4	0.8	0.1	0.0	0.0	0.0	0.0	0.0	0.0	2.2	7.5	24.4
Frost days [days]	23.1	20.1	14.6	5.7	0.3	0.0	0.0	0.0	0.0	2.3	12.5	21.1	99.7
Summer days [days]	0.0	0.0	0.0	0.0	1.7	6.7	13.4	11.2	2.2	0.0	0.0	0.0	35.2
Heat days [days]	0.0	0.0	0.0	0.0	0.0	0.6	1.8	1.4	0.0	0.0	0.0	0.0	3.8
Sunshine [h]	-	-	-	-	-	-	-	-	-	-	-	-	-
Sunshine [%]	-	-	-	-	-	-	-	-	-	-	-	-	-
Bright days [days]	-	-	-	-	-	-	-	-	-	-	-	-	-
Cloudy days [days]	-	-	-	-	-	-	-	-	-	-	-	-	-
Precipitation sum [mm]	57	55	72	84	126	115	113	117	100	91	74	72	1075
Precipitation 1 mm [days]	10.2	9.5	10.6	10.7	13.4	11.4	10.6	10.5	8.9	10.4	10.6	10.3	127.1
Precipitation 5 mm [days]	3.9	3.9	4.9	5.2	7.5	7.1	6.6	6.6	5.4	6.2	4.6	4.9	66.8
Precipitation 10 mm [days]	1.5	1.3	1.9	2.8	4.3	4.4	3.7	4.2	3.5	3.2	2.1	2.3	35.2
Precipitation 50 mm [days]	0.0	0.0	0.0	0.0	0.1	0.1	0.0	0.1	0.1	0.0	0.0	0.0	0.4
Precipitation 100 mm [days]	0.0	0.0	0.0	0.0	0.0	0.0	0.0	0.0	0.0	0.0	0.0	0.0	0.0



Climate normals Fribourg / Posieux

Reference period 1981–2010

	Jan	Feb	Mar	Apr	May	Jun	Jul	Aug	Sep	Oct	Nov	Dec	Year
Precipitation 0%–q [mm]	10	8	15	16	36	22	39	12	24	7	16	13	649
Precipitation 20%–q [mm]	27	32	40	42	80	67	69	80	48	63	35	51	950
Precipitation 40%–q [mm]	40	38	50	62	103	91	97	105	68	75	51	63	1080
Precipitation 60%–q [mm]	58	56	74	98	138	120	133	122	118	102	76	77	1148
Precipitation 80%–q [mm]	91	76	91	119	173	168	148	165	145	125	124	101	1192
Precipitation 100%–q [mm]	134	128	252	180	233	243	224	207	293	184	163	134	1378
Snowfall [cm]	14	16	11	3	0	0	0	0	0	0	6	13	63
Snowfall [days]	3.8	4.1	2.5	0.9	0.0	0.0	0.0	0.0	0.0	0.1	1.5	3.1	16.0
Snow cover > 0 cm [days]	9.7	8.4	3.8	1.1	0.0	0.0	0.0	0.0	0.0	0.1	2.7	5.8	31.6
Snow cover > 1 cm [days]	8.3	7.2	3.1	0.8	0.0	0.0	0.0	0.0	0.0	0.1	2.3	4.9	26.7
Snow cover > 10 cm [days]	1.2	1.4	0.5	0.0	0.0	0.0	0.0	0.0	0.0	0.0	0.4	1.4	4.9
Snow cover > 50 cm [days]	0.0	0.0	0.0	0.0	0.0	0.0	0.0	0.0	0.0	0.0	0.0	0.0	0.0
Relative humidity [%]	84	79	72	72	73	71	69	71	77	82	84	84	76
Vapor pressure [hPa]	5.8	5.8	6.8	7.9	10.8	12.8	14.2	14.1	12.2	10.1	7.4	6.1	9.5
Air pressure station [hPa]	943.0	941.5	940.7	938.2	939.9	941.9	942.6	942.3	942.4	941.9	941.0	941.5	941.4
Air pressure red. 850 [m]	1473	1463	1468	1456	1485	1512	1526	1521	1510	1493	1468	1463	1487
Wind speed [m/s]	–	–	–	–	–	–	–	–	–	–	–	–	–
Wind 10 m/s [days]	–	–	–	–	–	–	–	–	–	–	–	–	–
Wind 20 m/s [days]	–	–	–	–	–	–	–	–	–	–	–	–	–
Wind 30 m/s [days]	–	–	–	–	–	–	–	–	–	–	–	–	–
Visibility < 100 m [days]	–	–	–	–	–	–	–	–	–	–	–	–	–
Visibility < 1000 m [days]	–	–	–	–	–	–	–	–	–	–	–	–	–



Climate normals Fribourg / Posieux

Reference period 1981–2010

Legend:

Climate graph:	Graph showing long-term means of monthly mean temperature, mean monthly maximum and minimum temperature as well as monthly precipitation sums of a certain measuring site.
Table:	Long-term means of monthly mean values and monthly sums of different climatological parameters. Missing values (no measurements or measuring period too short) are labeled as "-".
<i>Temperature [°C]</i>	monthly mean temperature
<i>Maximum temp [°C]</i>	monthly mean of daily maximum temperature
<i>Minimum temp [°C]</i>	monthly mean of daily minimum temperature
<i>Ice days [days]</i>	number of days with maximum temperature below 0° Celsius
<i>Frost days [days]</i>	number of days with minimum temperature below 0° Celsius
<i>Summer days [days]</i>	number of days with maximum temperature equal to or above 25° Celsius
<i>Heat days [days]</i>	number of days with maximum temperature equal to or above 30° Celsius
<i>Sunshine [h]</i>	measured sunshine duration
<i>Sunshine [%]</i>	ratio of measured sunshine duration to possible sunshine duration
Bright days [days]	number of days with sunshine duration greater than 80%
Cloudy days [days]	number of days with sunshine duration less than 20%
<i>Precipitation sum [mm]</i>	monthly precipitation sum
<i>Precipitation X mm [days]</i>	number of days with precipitation equal to or above X mm
<i>Precipitation X%-q [mm]</i>	X%-quantile of the monthly precipitation sums (0%: lowest value; 40%: 40%/60% of the values are lower/higher than this value; 100%: highest value) Attention: Annual values do not correspond to the sum of the monthly values.
Snowfall [cm]	monthly snowfall sum
Snowfall [days]	number of days with snowfall equal to or above 1 cm
Snow cover > X cm [days]	number of days with snow cover above X cm
Relative humidity [%]	monthly mean of relative humidity
<i>Vapor pressure [hPa]</i>	monthly mean of vapor pressure
<i>Air pressure station [hPa]</i>	monthly mean of air pressure at station level
<i>Air pressure red. 850 [m]</i>	monthly mean of the geopotential height of the 850 hPa level
<i>Wind speed [m/s]</i>	mean monthly wind speed
Wind X m/s [days]	number of days with wind speed (10min mean) equal to or above X m/s
Visibility < X m [days]	number of days with visibility < X m (at least once a day). A visibility below 1000 m is also called fog.

Homogeneous data series were used to calculate long-term means for the parameters shown in italics. The selection of the parameters is based on the guidelines of the World Meteorological Organization (WMO–No. 1203). The values can change due to continuous quality control and homogeneity updates. Further information on the Swiss climate and on the homogenization topic can be found on www.meteoswiss.ch.