



Climate normals Bern / Zollikofen

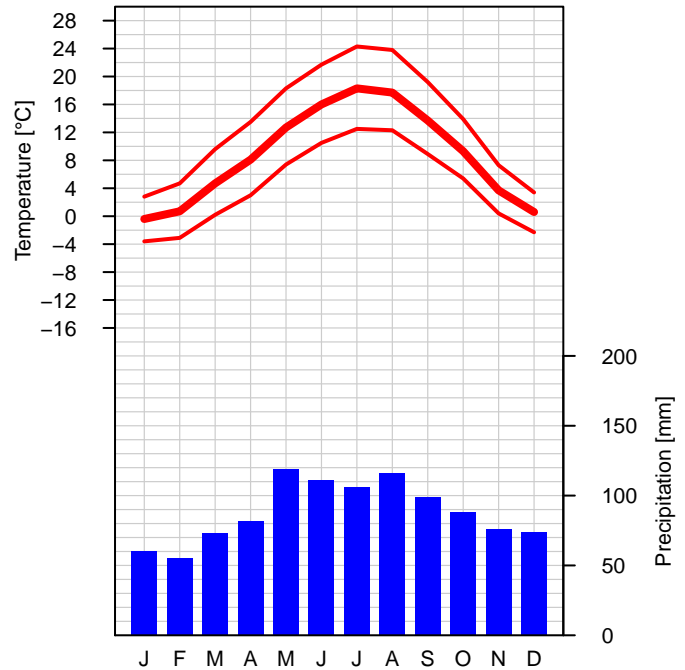
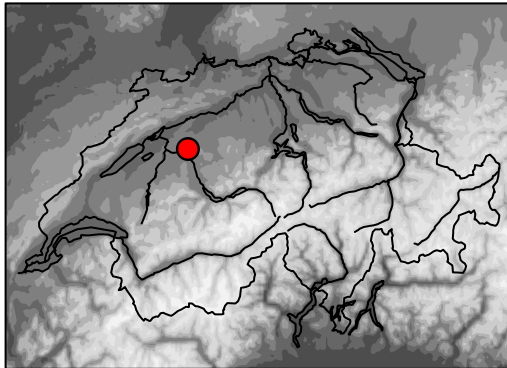
Reference period 1981–2010

Altitude a.s.l.: 553 m

Geogr. coord.: 46.99 N / 7.46 E

Swiss coord.: 2'601'934 / 1'204'410

Climate region: Central plateau



	Jan	Feb	Mar	Apr	May	Jun	Jul	Aug	Sep	Oct	Nov	Dec	Year
Temperature [°C]	-0.4	0.7	4.7	8.1	12.7	16.0	18.3	17.7	13.7	9.3	3.7	0.6	8.8
Maximum temp [°C]	2.8	4.7	9.6	13.5	18.3	21.7	24.3	23.8	19.2	13.9	7.3	3.4	13.5
Minimum temp [°C]	-3.6	-3.1	0.2	3.0	7.4	10.5	12.5	12.3	8.9	5.4	0.4	-2.3	4.3
Ice days [days]	8.8	5.0	0.6	0.0	0.0	0.0	0.0	0.0	0.0	0.0	1.6	6.6	22.6
Frost days [days]	25.2	21.5	14.6	4.8	0.1	0.0	0.0	0.0	0.0	2.1	12.8	22.6	103.7
Summer days [days]	0.0	0.0	0.0	0.2	2.4	8.5	15.1	12.7	2.7	0.0	0.0	0.0	41.6
Heat days [days]	0.0	0.0	0.0	0.0	0.1	0.9	3.0	2.2	0.1	0.0	0.0	0.0	6.3
Sunshine [h]	64	87	136	158	182	206	237	217	165	113	68	49	1683
Sunshine [%]	25	32	40	42	42	46	53	54	48	36	26	20	41
Bright days [days]	4.2	5.4	6.8	6.8	6.2	6.3	8.7	9.6	8.0	5.2	3.9	2.9	74.0
Cloudy days [days]	18.0	14.2	12.2	10.9	10.4	8.8	6.8	7.3	9.3	12.5	16.3	20.1	146.8
Precipitation sum [mm]	60	55	73	82	119	111	106	116	99	88	76	74	1059
Precipitation 1 mm [days]	9.6	9.0	10.6	10.4	12.6	11.1	10.8	10.7	8.9	10.4	10.2	9.9	124.2
Precipitation 5 mm [days]	4.1	4.0	5.0	5.4	7.5	7.0	6.2	6.6	5.7	5.8	4.8	5.2	67.3
Precipitation 10 mm [days]	1.5	1.5	2.3	2.5	4.1	3.9	3.5	4.1	3.2	3.4	2.4	2.5	34.9
Precipitation 50 mm [days]	0.0	0.0	0.0	0.1	0.0	0.0	0.1	0.1	0.2	0.0	0.0	0.0	0.5
Precipitation 100 mm [days]	0.0	0.0	0.0	0.0	0.0	0.0	0.0	0.0	0.0	0.0	0.0	0.0	0.0



Climate normals *Bern / Zollikofen*

Reference period 1981–2010

	Jan	Feb	Mar	Apr	May	Jun	Jul	Aug	Sep	Oct	Nov	Dec	Year
Precipitation 0%–q [mm]	11	8	24	13	34	41	35	10	20	11	15	21	738
Precipitation 20%–q [mm]	26	30	42	44	76	62	59	71	49	53	36	49	928
Precipitation 40%–q [mm]	43	40	53	54	99	84	93	92	72	72	54	60	987
Precipitation 60%–q [mm]	58	53	66	90	135	117	119	121	123	95	75	78	1105
Precipitation 80%–q [mm]	88	85	93	124	168	142	147	162	137	127	127	104	1225
Precipitation 100%–q [mm]	149	118	248	209	189	276	209	224	252	163	183	141	1318
Snowfall [cm]	13	13	7	1	0	0	0	0	0	0	6	13	53
Snowfall [days]	4.1	3.5	2.0	0.3	0.0	0.0	0.0	0.0	0.0	0.0	1.2	3.1	14.2
Snow cover > 0 cm [days]	12.1	10.0	4.2	0.4	0.0	0.0	0.0	0.0	0.0	0.0	2.6	7.5	36.8
Snow cover > 1 cm [days]	10.4	8.5	3.4	0.3	0.0	0.0	0.0	0.0	0.0	0.0	2.2	6.6	31.4
Snow cover > 10 cm [days]	2.2	2.4	0.8	0.0	0.0	0.0	0.0	0.0	0.0	0.0	0.2	1.9	7.5
Snow cover > 50 cm [days]	0.0	0.0	0.0	0.0	0.0	0.0	0.0	0.0	0.0	0.0	0.0	0.0	0.0
Relative humidity [%]	84	79	73	71	73	71	71	73	79	84	85	85	77
Vapor pressure [hPa]	5.3	5.4	6.5	7.9	10.9	13.3	15.1	15.0	12.7	10.1	7.1	5.7	9.6
Air pressure station [hPa]	954.5	952.9	951.9	949.3	951.0	952.8	953.5	953.2	953.4	952.9	952.2	952.9	952.5
Air pressure red. sea [hPa]	1022	1020	1018	1015	1015	1017	1017	1017	1018	1018	1019	1021	1018
Wind speed [m/s]	1.8	1.9	2.1	2.0	1.9	1.9	1.8	1.6	1.6	1.6	1.5	1.7	1.8
Wind 10 m/s [days]	1.5	1.4	1.6	0.3	0.3	0.3	0.1	0.1	0.1	0.7	0.6	1.3	8.3
Wind 20 m/s [days]	0.0	0.0	0.0	0.0	0.0	0.0	0.0	0.0	0.0	0.0	0.0	0.0	0.0
Wind 30 m/s [days]	0.0	0.0	0.0	0.0	0.0	0.0	0.0	0.0	0.0	0.0	0.0	0.0	0.0
Visibility < 100 m [days]	0.2	0.0	0.0	0.1	0.0	0.0	0.0	0.0	0.2	0.3	0.4	0.4	1.6
Visibility < 1000 m [days]	5.5	3.3	2.1	1.5	0.9	0.4	0.3	0.8	2.0	5.0	4.8	4.9	31.5



Climate normals Bern / Zollikofen

Reference period 1981–2010

Legend:

Climate graph:	Graph showing long-term means of monthly mean temperature, mean monthly maximum and minimum temperature as well as monthly precipitation sums of a certain measuring site.
Table:	Long-term means of monthly mean values and monthly sums of different climatological parameters. Missing values (no measurements or measuring period too short) are labeled as "-".
<i>Temperature [°C]</i>	monthly mean temperature
<i>Maximum temp [°C]</i>	monthly mean of daily maximum temperature
<i>Minimum temp [°C]</i>	monthly mean of daily minimum temperature
<i>Ice days [days]</i>	number of days with maximum temperature below 0° Celsius
<i>Frost days [days]</i>	number of days with minimum temperature below 0° Celsius
<i>Summer days [days]</i>	number of days with maximum temperature equal to or above 25° Celsius
<i>Heat days [days]</i>	number of days with maximum temperature equal to or above 30° Celsius
<i>Sunshine [h]</i>	measured sunshine duration
<i>Sunshine [%]</i>	ratio of measured sunshine duration to possible sunshine duration
Bright days [days]	number of days with sunshine duration greater than 80%
Cloudy days [days]	number of days with sunshine duration less than 20%
<i>Precipitation sum [mm]</i>	monthly precipitation sum
<i>Precipitation X mm [days]</i>	number of days with precipitation equal to or above X mm
<i>Precipitation X%-q [mm]</i>	X%-quantile of the monthly precipitation sums (0%: lowest value; 40%: 40%/60% of the values are lower/higher than this value; 100%: highest value) Attention: Annual values do not correspond to the sum of the monthly values.
Snowfall [cm]	monthly snowfall sum
Snowfall [days]	number of days with snowfall equal to or above 1 cm
Snow cover > X cm [days]	number of days with snow cover above X cm
Relative humidity [%]	monthly mean of relative humidity
<i>Vapor pressure [hPa]</i>	monthly mean of vapor pressure
<i>Air pressure station [hPa]</i>	monthly mean of air pressure at station level
<i>Air pressure red. sea [hPa]</i>	monthly mean of air pressure reduced to sea level
<i>Wind speed [m/s]</i>	mean monthly wind speed
Wind X m/s [days]	number of days with wind speed (10min mean) equal to or above X m/s
Visibility < X m [days]	number of days with visibility < X m (at least once a day). A visibility below 1000 m is also called fog.

Homogeneous data series were used to calculate long-term means for the parameters shown in italics. The selection of the parameters is based on the guidelines of the World Meteorological Organization (WMO–No. 1203). The values can change due to continuous quality control and homogeneity updates. Further information on the Swiss climate and on the homogenization topic can be found on www.meteoswiss.ch.