



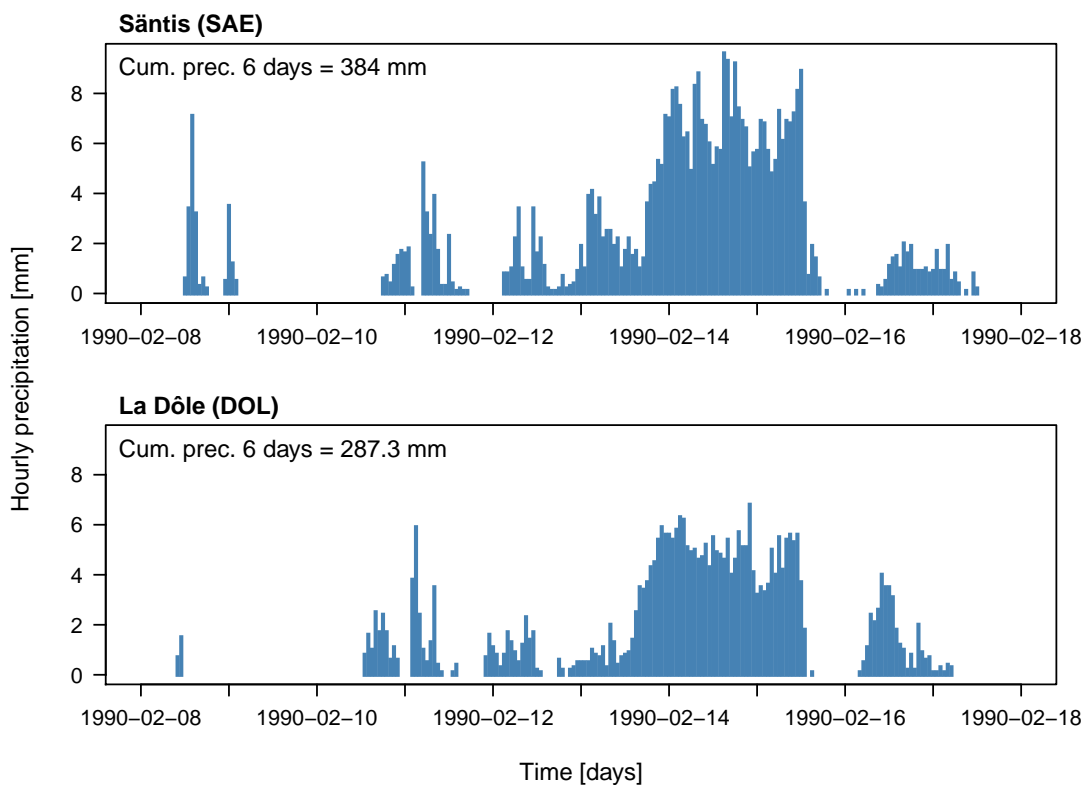
Event of 10-15 February 1990

Precipitation event that had impacts in the Jura region, in the Vaud Alps and on the eastern Alpine north slope

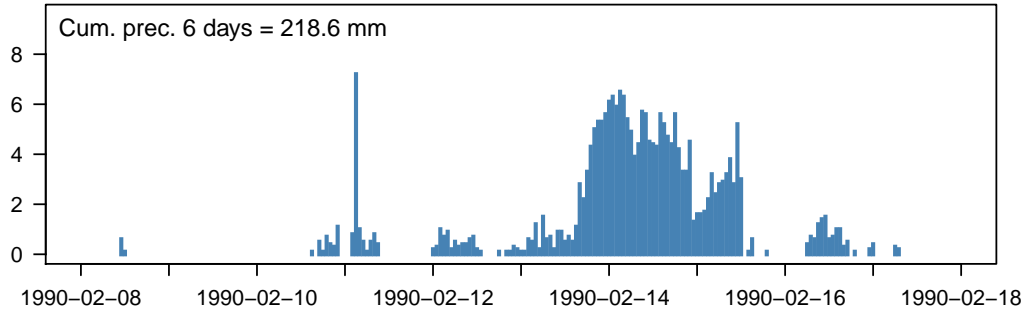
Hyetographs

Hourly precipitation, hh:40-hh:40 UTC

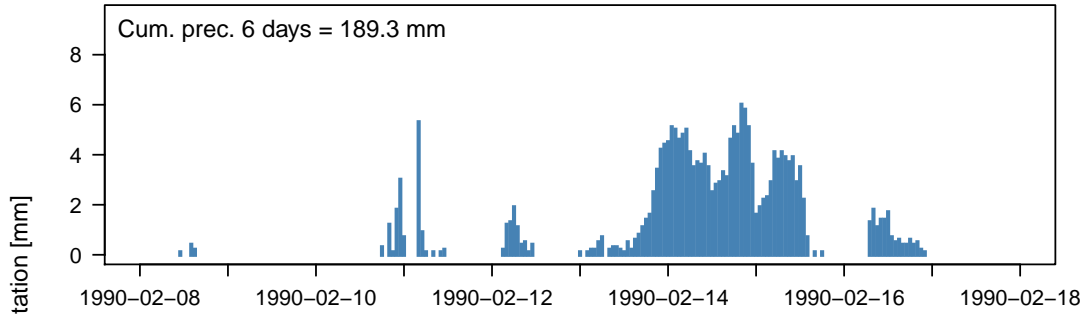
Hyetographs for 10 stations having high cumulated precipitation over a duration interval of 6 days



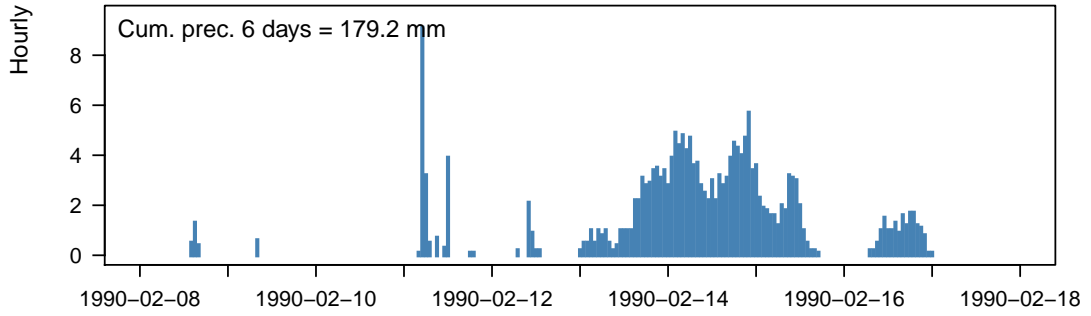
Bullet / La Frétaz (FRE)



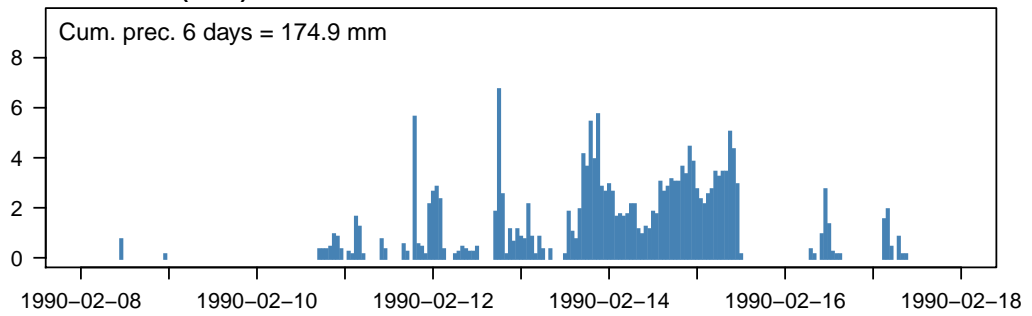
Adelboden (ABO)



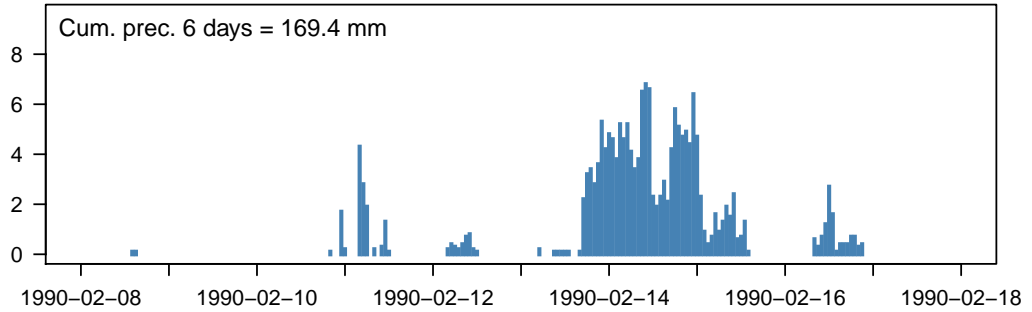
Grimsel Hospiz (GRH)



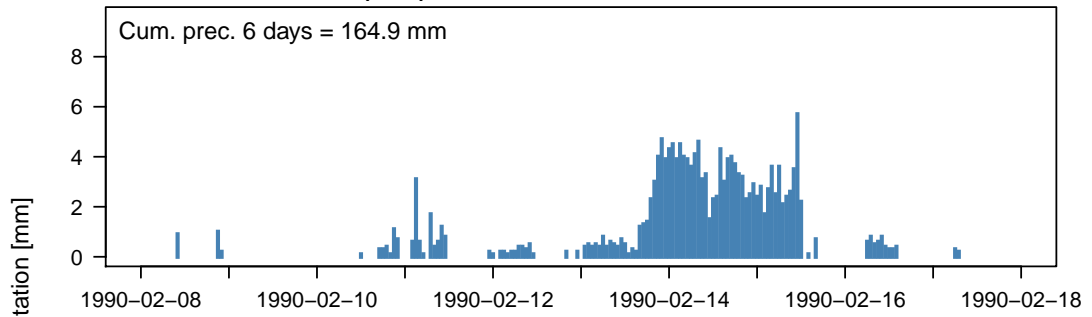
Chasseral (CHA)



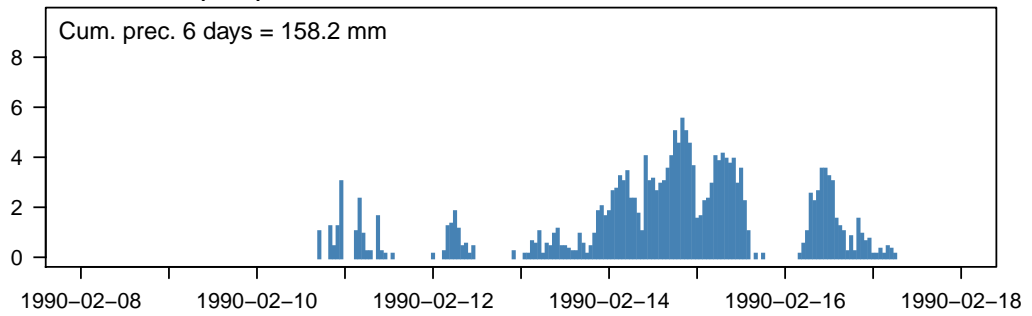
Interlaken (INT)



La Chaux-de-Fonds (CDF)



Le Moléson (MLS)



Wynau (WYN)

